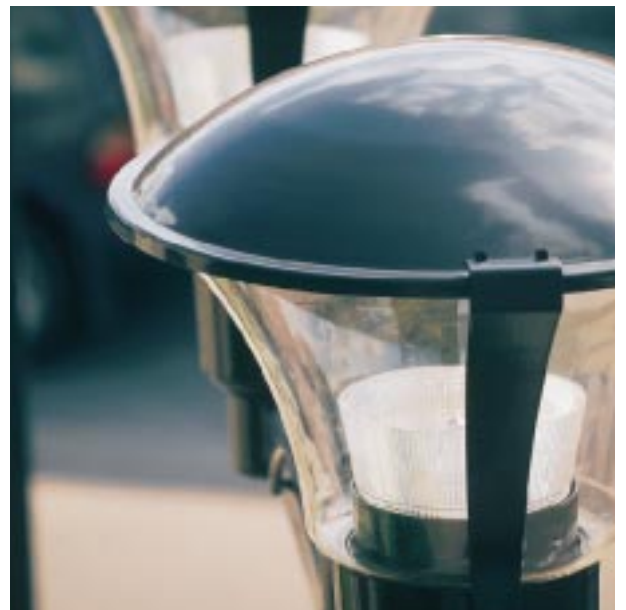


FULGORA

Two reflectors incorporated into the sealed optical assembly provide an indirect lighting distribution. A refractor allows to optimise the vertical illuminance levels. This luminaire is available with either a symmetric or asymmetric light distribution. Equipped with lamps up to 150 W, the Fulgora is designed for a post top mounting between 5 and 6 metres.





Materials

Base: cast aluminium
 Protector: thermoformed coextruded polycarbonate stabilized against UV-rays
 Cover: spun aluminium
 Reflectors: (lower and upper) spun, chemically polished aluminium
 Refractor: injection-moulded acrylic

Mechanical properties

Optical assembly tightness: IP66 (Sealsafe®) (*)
 Control gear compartment tightness: IP44 (*)
 Impact resistance:
 • polycarbonate: IK 10 (**)
 • acrylic: IK 06 (**)
 Aerodynamic resistance: $C_xS= 0.223 \text{ m}^2$
 Empty weight: 14 kg
 Incorporable control gear mounted on a disconnectable removable plate.

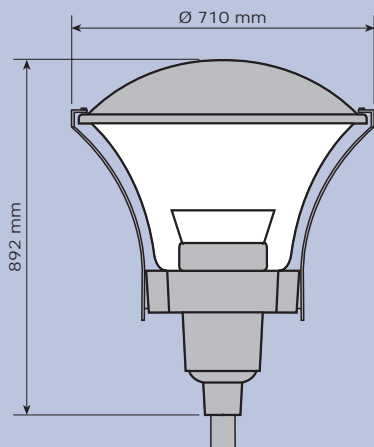
(*) according to EN 60598
 (**) according to EN 50102

Electrical specifications

Nominal voltage: 230 V - 50 Hz
 Class I

Dimensions

Recommended installation height: 5 to 6 m



Maintenance

Access to lamp and gear by undoing two Allen screws and pivoting the upper part of the luminaire around a hinge. The luminaire is held open by two stainless steel retaining arms.
 Access to the lamp can be gained by turning the plug. The control gear plate can be removed by undoing one screw and disconnecting the wiring.

Finishes

Base and cover:
 • standard: black (RAL 9005)
 • on request: any other RAL colour
 Protector: clear polycarbonate

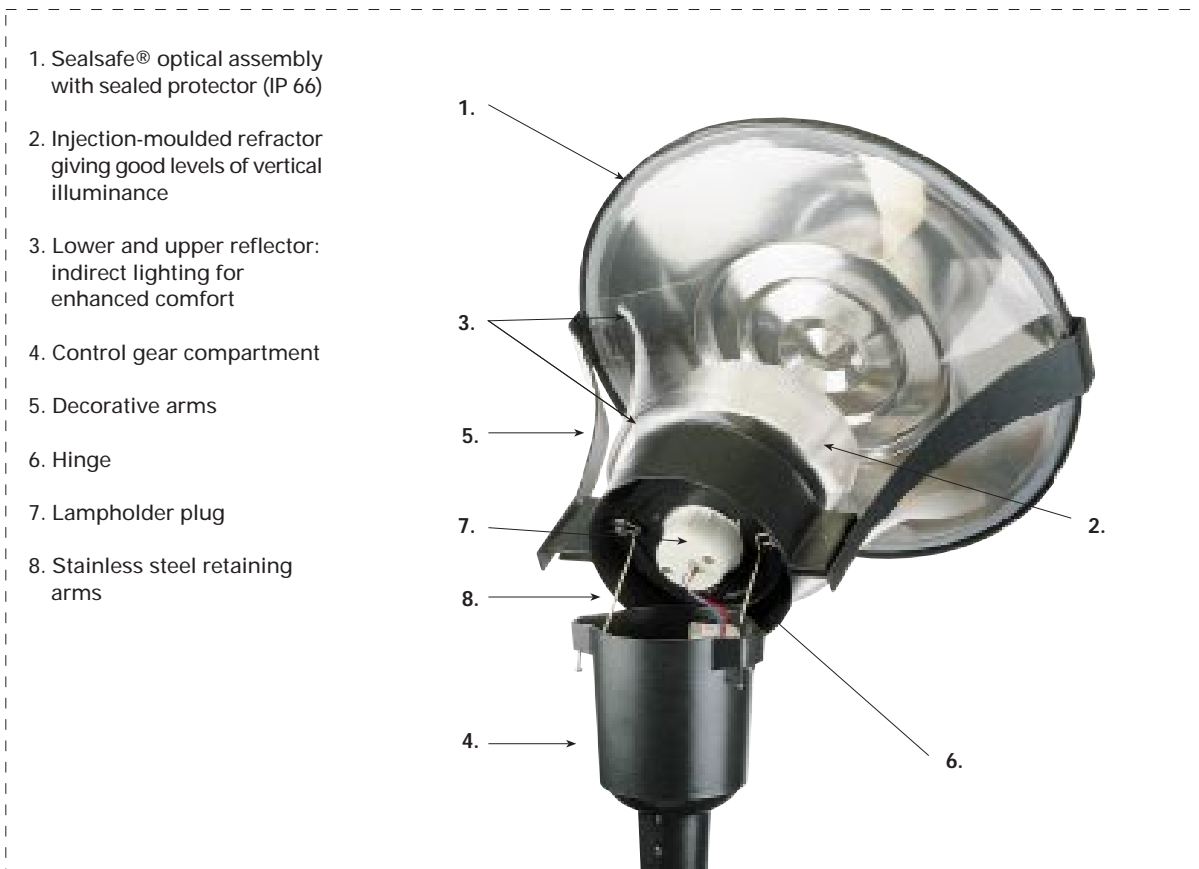
Options

Asymmetrical light distribution
 Class II
 Protector: clear acrylic
 Fuses

Lamp table

Indirect light distribution		
Lamp type	Reflector type	
	1455/1487	1575/1565
White sodium	50W (T)	-
	100W (T)	-
High-pressure sodium	50W (T)	-
	70W (T)	-
	100W (T)	-
	150W (T)	-
Metal halide	70W (T)	-
	150W (T)	-
Metal halide with ceramic arc tube	70W (T)	70W (T)
	150W (T)	150W (T)
Induction	85W (O)	

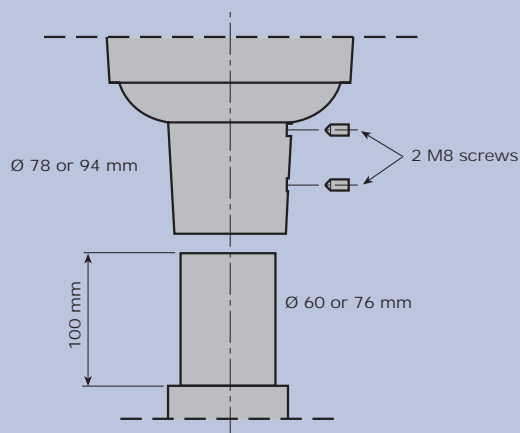
T= Tubular O= Ovoid



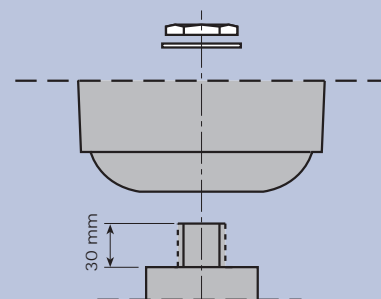
Mountings

Post top

- Sheath mounting:
clamping by two press-screws



- Clamping by counternut
1"1/4 gas thread



FULGORA



FUL-LOC-0001-AN-04